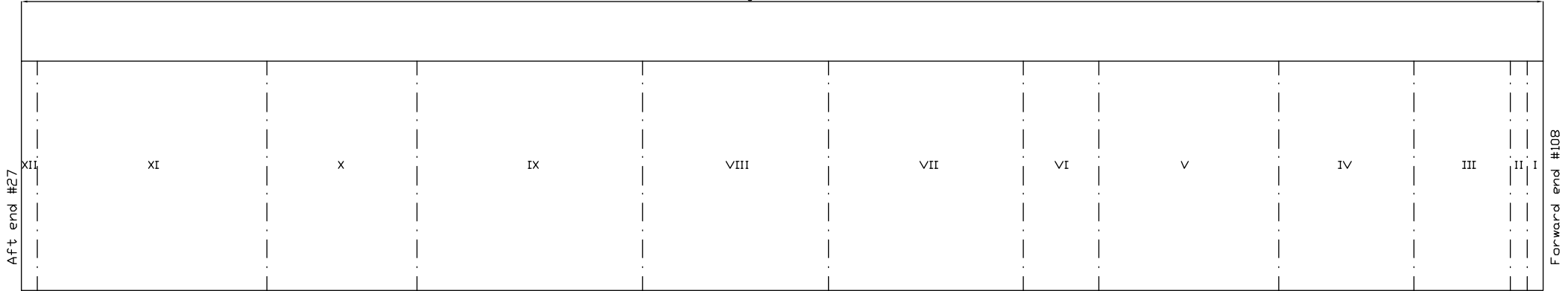
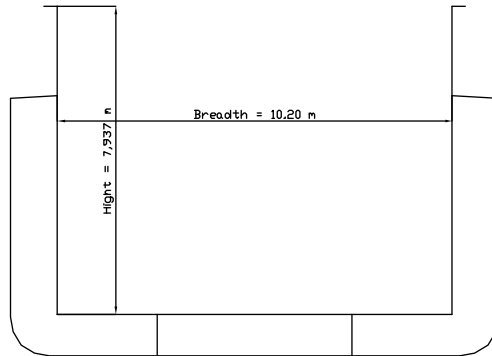


Total length of hold = 52,65 m



Grain Compartment	Length (m)	Volume (m <sup>3</sup> )	Volume (ft <sup>3</sup> )
I	0,56	45,3	1601,0
II	0,56	45,3	1601,0
III	7,365	596,3	21054,2
IV	5,20	421,0	14865,2
V	7,80	631,5	22297,9
VI	6,43	520,6	18382,4
VII	6,75	546,5	19296,2
VIII	2,60	210,5	7432,8
IX	6,25	506,0	17866,9
X	4,675	378,5	13364,5
XI	3,90	315,7	11148,8
XII	0,56	45,3	1601,0
Total	52,65	4262,5	150511,9



The hold is fitted with 3 grain bulkheads.  
 When grain bulkheads are not in use, they are placed in compartment I, II and XII  
 When grain bulkheads are not in use, the hold volume (III-XI) is:  
 -4126,6 m<sup>3</sup>  
 -145708,9 ft<sup>3</sup>

Example:

With 3 grain bulkheads, the hold can be divided into four compartments, for example:

- Compartment I-IV (1107,9 m<sup>3</sup>)
- Compartment V-VII (1698,6 m<sup>3</sup>)
- Compartment VIII-IX (716,5 m<sup>3</sup>)
- Compartment X-XII (739,5 m<sup>3</sup>)

Ship:	M/S Hav Streym	Drawn by:	NauCon (+298223447)	Date:	310512	Scale:	
Case:	GRAIN HOLD AND BULKHEADS						