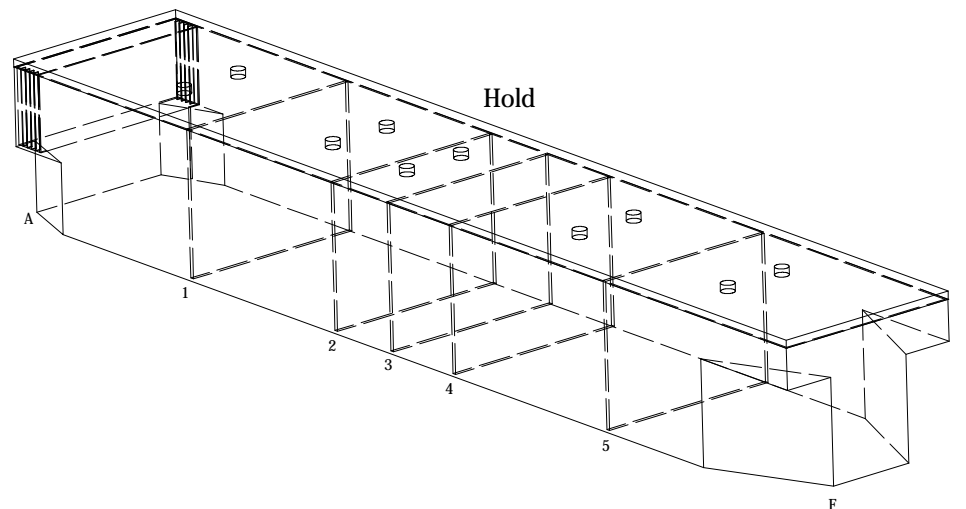
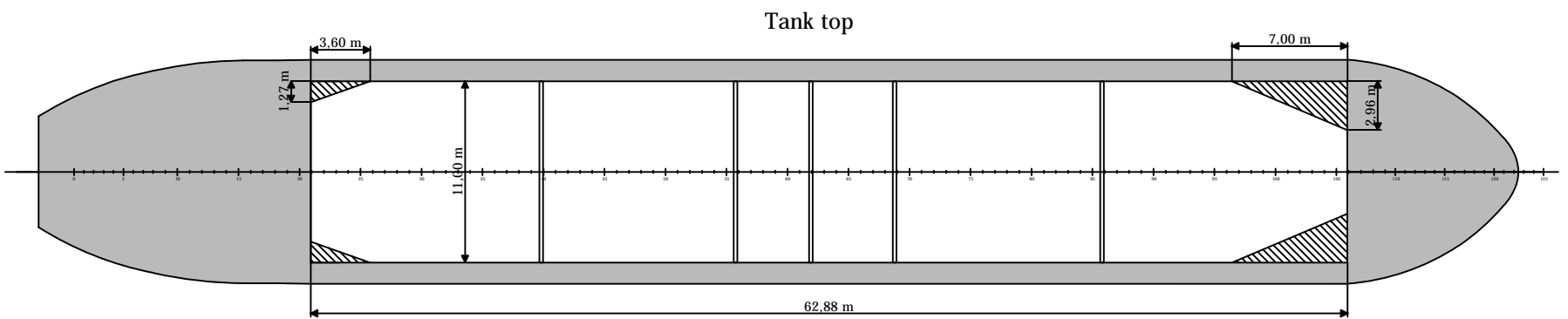
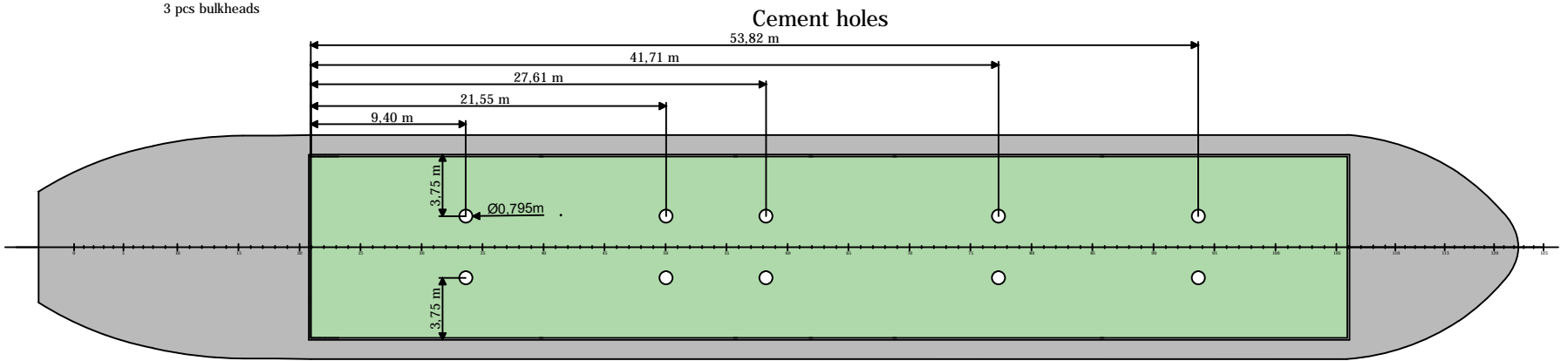
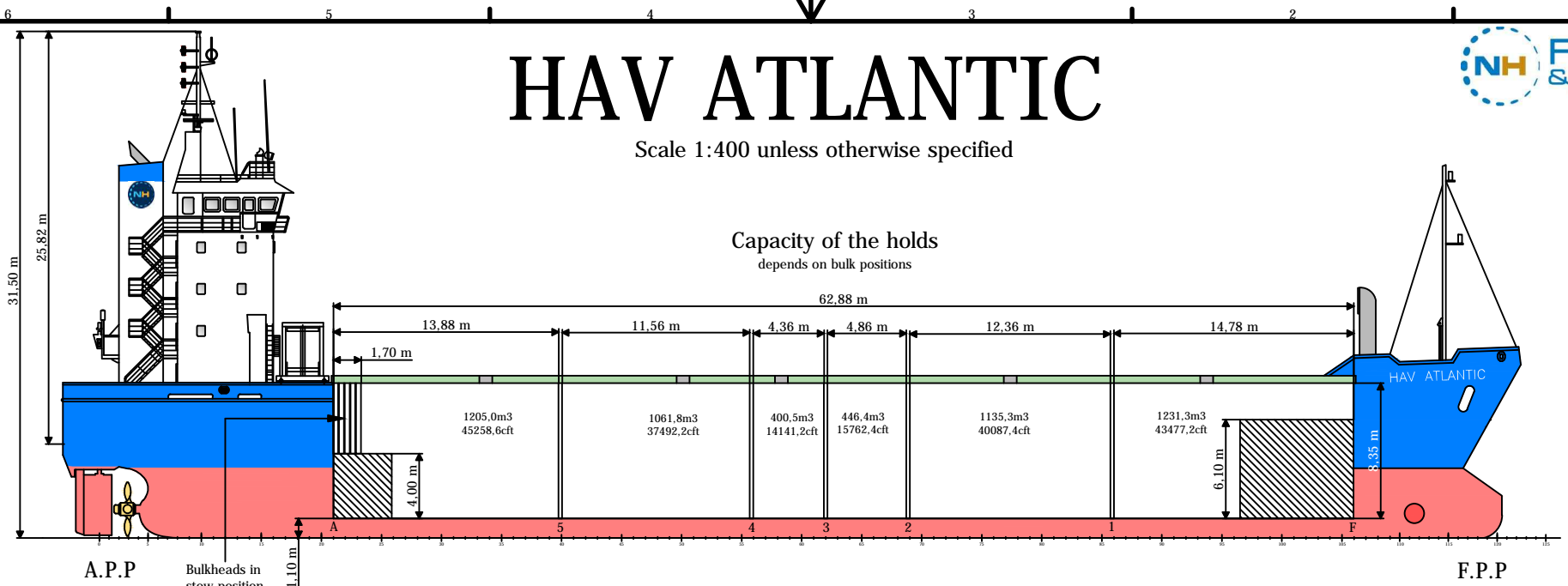


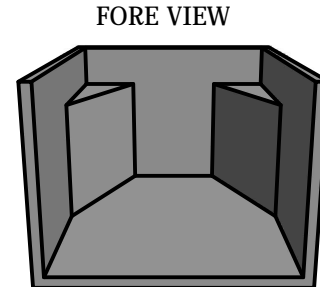
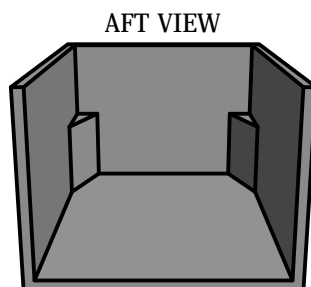
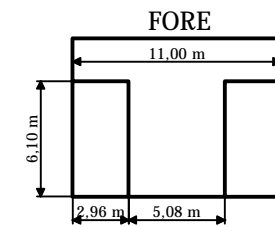
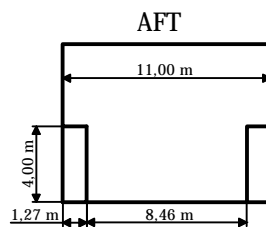
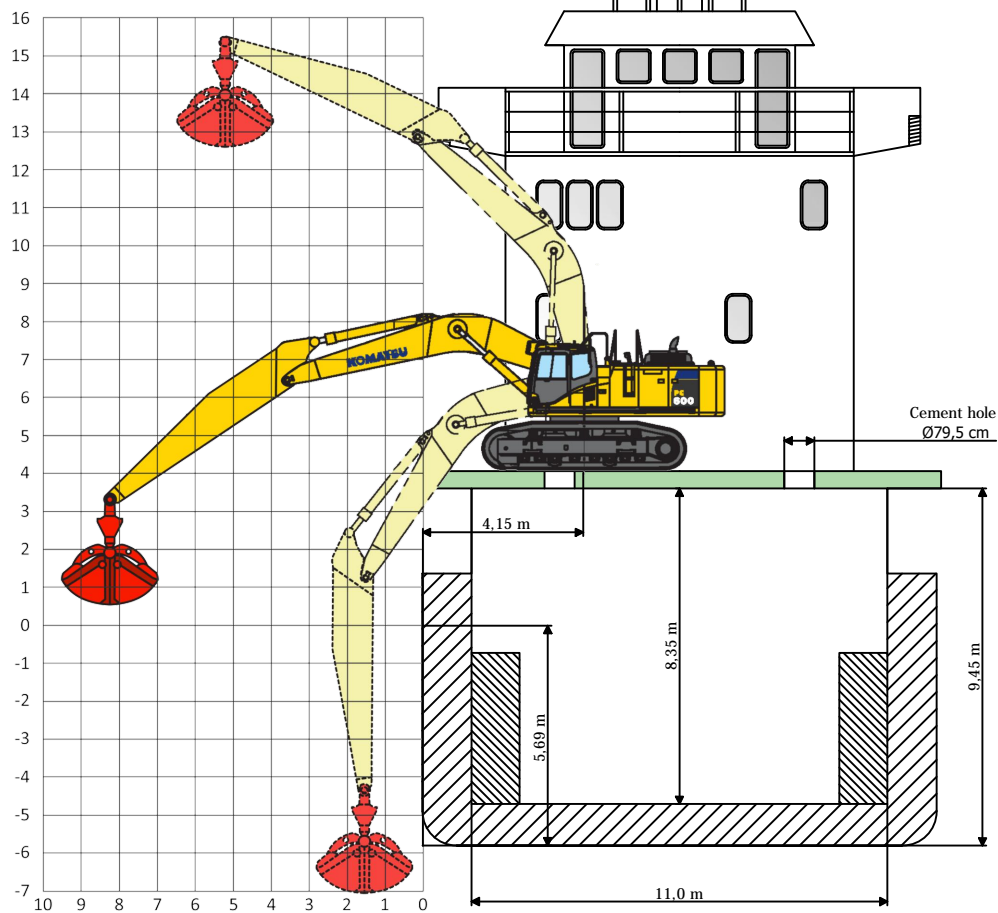
HAV ATLANTIC

Scale 1:400 unless otherwise specified



Ballast: Water line to hatch coaming: 6,45 m
Fully laden: Water line to hatch coaming: 3,79 m
Cement holes: Ø79,5cm

Scale ≈ 1:200



Draft at 100ton oil and 30ton water		
Draft	DWTC	t/cm
3,00m	1.027	9,44
3,20m	1.218	9,50
3,40m	1.41	9,52
3,60m	1.603	9,64
3,80m	1.798	9,74
4,00m	1.995	9,84
4,20m	2.194	9,95
4,40m	2.395	10,06
4,60m	2.599	10,19
4,80m	2.805	10,31
5,00m	3.014	10,45
5,20m	3.225	10,56
5,40m	3.439	10,68
5,60m	3.655	10,79
5,69m	3.758	10,83

Capacity of the holds						
Position	A - 5	5 - 4	4 - 3	3 - 2	2 - 1	1 - F
Length m	13,88	11,56	4,36	4,86	12,36	14,78
Volume m ³	1205,0	1061,8	400,5	446,4	1135,3	1231,3
Volume cft	42548,6	37492,2	14141,2	15762,4	40087,4	43477,2